

Guardian House

愛群商業大廈

Surrender Opportunity

savills.com.hk

savills
第一太平戴維斯



For identification purposes only

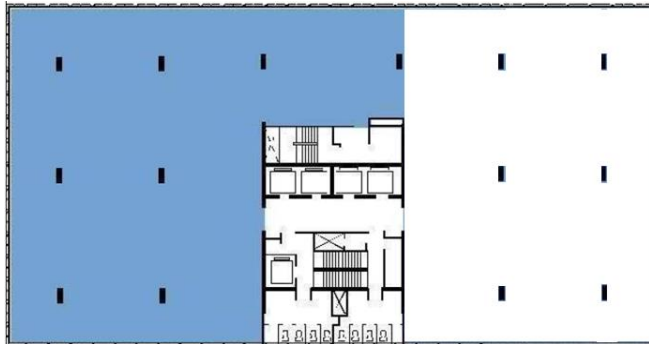


PREMISES DETAILS (SUBJECT TO CONTRACT & AVAILABILITY):

- Approx. 4,950 sq. ft. (Gross)
- High floor, openview
- Attractive Rental Package
- Available in Apr 2016

INSPECTION ARRANGEMENTS:

- By appointment



BUILDING FEATURES:

- F&B in G/F
- Professional management
- In-house car park

For further information, please contact:

Mr. Alvin Leung (E-228978)

Contact: 2842 4227/6709 8536

Email: ahyleung@savills.com.hk

Disclaimer: Subject to contract and availability. This document is prepared by Savills (Hong Kong) Limited for information only. Whilst reasonable care has been exercised in preparing this document, it is subject to change, and Savills (Hong Kong) Limited makes no representation as to its truth, accuracy or completeness, and accordingly cannot be held responsible for liability whatsoever for any loss howsoever arising from or in reliance upon the whole or any part of the contents of this document.

Savills (Hong Kong) Limited

Co. EA Licence: C-002450

23/F Two Exchange Square, Central, Hong Kong