

Sole Leasing Agent 獨家租賃代理

savills
第一太平戴維斯

savills.com.hk
Licence: C-002450

Prime Brand New Harbour View Office For Lease

優質全新維港景辦公室單位出租

18 Hung Luen Road, Hunghom

Cheung Kei Center

祥祺中心

紅磡紅鸞道18號



The Premises | 物業 Gross Area | 建築面積

Tower A (A座)

- ❖ G/F – 1/F (Retail) ❖ Approx. 約 7,000 – 9,000 sq.ft. 平方呎
- ❖ 2/F – 17/F (Office) ❖ Approx. 約 18,000 sq.ft. 平方呎

Tower B (B座) - Retail

- ❖ G/F & 1/F ❖ Approx. 約 13,000 sq.ft. 平方呎

Features | 物業特色

- ❖ Top-tier Grade A Office Building in the Core District of Hunghom
紅磡核心商業區著名甲級辦公大樓
- ❖ Panoramic View of Victoria Harbour
盡享180度維港景致
- ❖ 5-minute walk to Whampoa MTR Station
步行五分鐘直達黃埔港鐵站
- ❖ Located right next to Kerry Hotel and Wonderful
Worlds of Whampoa with varieties of F&B and shops
毗鄰香港嘉里大酒店及黃埔新天地，飲食購物配套完善

For any enquiries or viewing appointment, please contact 如有任何查詢或需預約視察物業，請聯絡：

William Yiu 姚先生 (E-037061)
2378 8664 / 9109 5478
wyiu@savills.com.hk

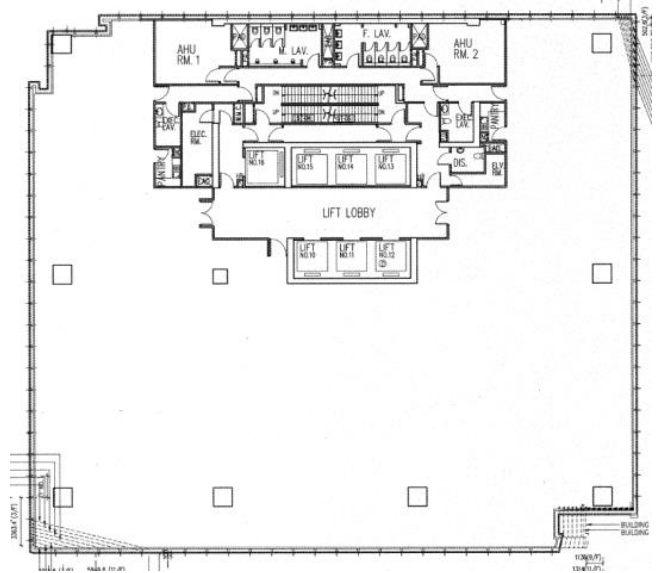
Glory Fock 霍小姐 (S-304603)
2378 8672 / 9266 3301
gsmfock@savills.com.hk

Ambrose Wong 王先生 (S-535789)
2378 8685 / 9630 1460
aklwong@savills.com.hk

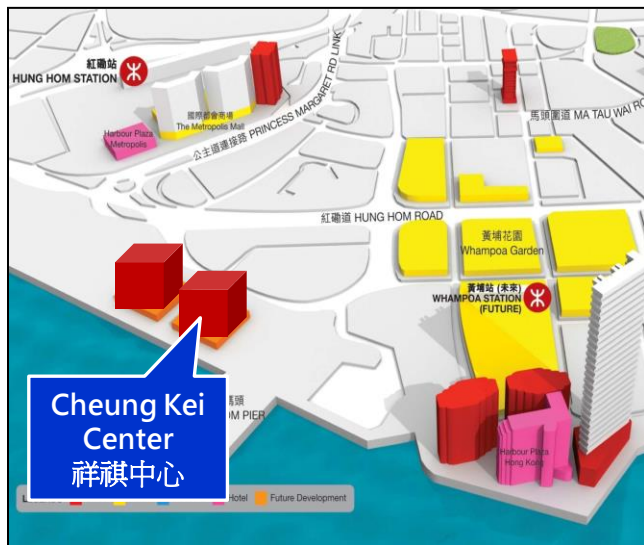
一切以合約為準 SUBJECT TO CONTRACT AND AVAILABILITY

SUBJECT TO CONTRACT: THIS DOCUMENT IS PREPARED BY SAVILLS FOR INFORMATION ONLY. WHILE REASONABLE CARE HAS BEEN EXERCISED IN PREPARING THIS DOCUMENT, IT IS SUBJECT TO CHANGE AND THESE PARTICULARS DO NOT CONSTITUTE, NOR CONSTITUTE PART OF, AN OFFER OR CONTRACT. INTERESTED PARTIES SHOULD NOT RELY ON THE STATEMENTS OR REPRESENTATIONS OF FACT BUT MUST SATISFY THEMSELVES BY INSPECTION OR OTHERWISE AS TO THE ACCURACY. NO PERSON IN THE EMPLOYMENT OF THE AGENT OR THE AGENT'S PRINCIPAL HAS ANY AUTHORITY TO MAKE ANY REPRESENTATIONS OR WARRANTIES WHATSOEVER IN RELATION TO THESE PARTICULARS AND SAVILLS CANNOT BE HELD RESPONSIBLE FOR ANY LIABILITY WHATSOEVER OR FOR ANY LOSS HOWSOEVER ARISING FROM OR IN RELIANCE UPON THE WHOLE OR ANY PART OF THE CONTENTS OF THIS DOCUMENT.

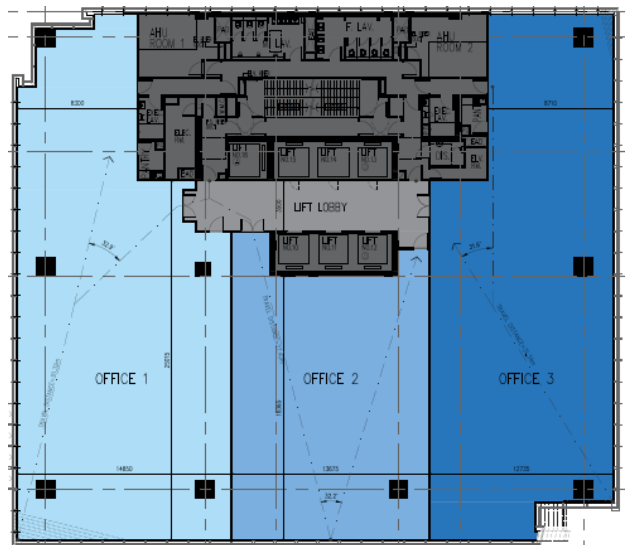
- ❖ Floor to ceiling approx. 3.05m to 3.35m clear
淨樓底高度3.05米至 3.35米
- ❖ 9.9m headroom entrance lobby with covered drop-off
9.9米華麗寫字樓大堂連上落客區
- ❖ 150mm raised floor system
150毫米架空地板
- ❖ Executive toilet with hot water supply provided for shower
行政洗手間設有熱水花灑提供
- ❖ Over 140 no. in-house car parking available
提供超過140個車位
- ❖ Fully integrated metal ceiling system
金屬天花飾照明裝置



Whole Floor Plan
(for identification purpose only)



Location Map



Sub-division Floor Plan
(for identification purpose only)

For any enquiries or viewing appointment, please contact 如有任何查詢或需預約視察物業，請聯絡：

William Yiu 姚先生 (E-037061)
2378 8664 / 9109 5478
wyiu@savills.com.hk

Glory Fock 霍小姐 (S-304603)
2378 8672 / 9266 3301
gsmfock@savills.com.hk

Ambrose Wong 王先生 (S-535789)
2378 8685 / 9630 1460
aklwong@savills.com.hk

一切以合約為準 SUBJECT TO CONTRACT AND AVAILABILITY

SUBJECT TO CONTRACT: THIS DOCUMENT IS PREPARED BY SAVILLS FOR INFORMATION ONLY. WHILE REASONABLE CARE HAS BEEN EXERCISED IN PREPARING THIS DOCUMENT, IT IS SUBJECT TO CHANGE AND THESE PARTICULARS DO NOT CONSTITUTE, NOR CONSTITUTE PART OF, AN OFFER OR CONTRACT. INTERESTED PARTIES SHOULD NOT RELY ON THE STATEMENTS OR REPRESENTATIONS OF FACT BUT MUST SATISFY THEMSELVES BY INSPECTION OR OTHERWISE AS TO THE ACCURACY. NO PERSON IN THE EMPLOYMENT OF THE AGENT OR THE AGENT'S PRINCIPAL HAS ANY AUTHORITY TO MAKE ANY REPRESENTATIONS OR WARRANTIES WHATSOEVER IN RELATION TO THESE PARTICULARS AND SAVILLS CANNOT BE HELD RESPONSIBLE FOR ANY LIABILITY WHATSOEVER OR FOR ANY LOSS HOWSOEVER ARISING FROM OR IN RELIANCE UPON THE WHOLE OR ANY PART OF THE CONTENTS OF THIS DOCUMENT.